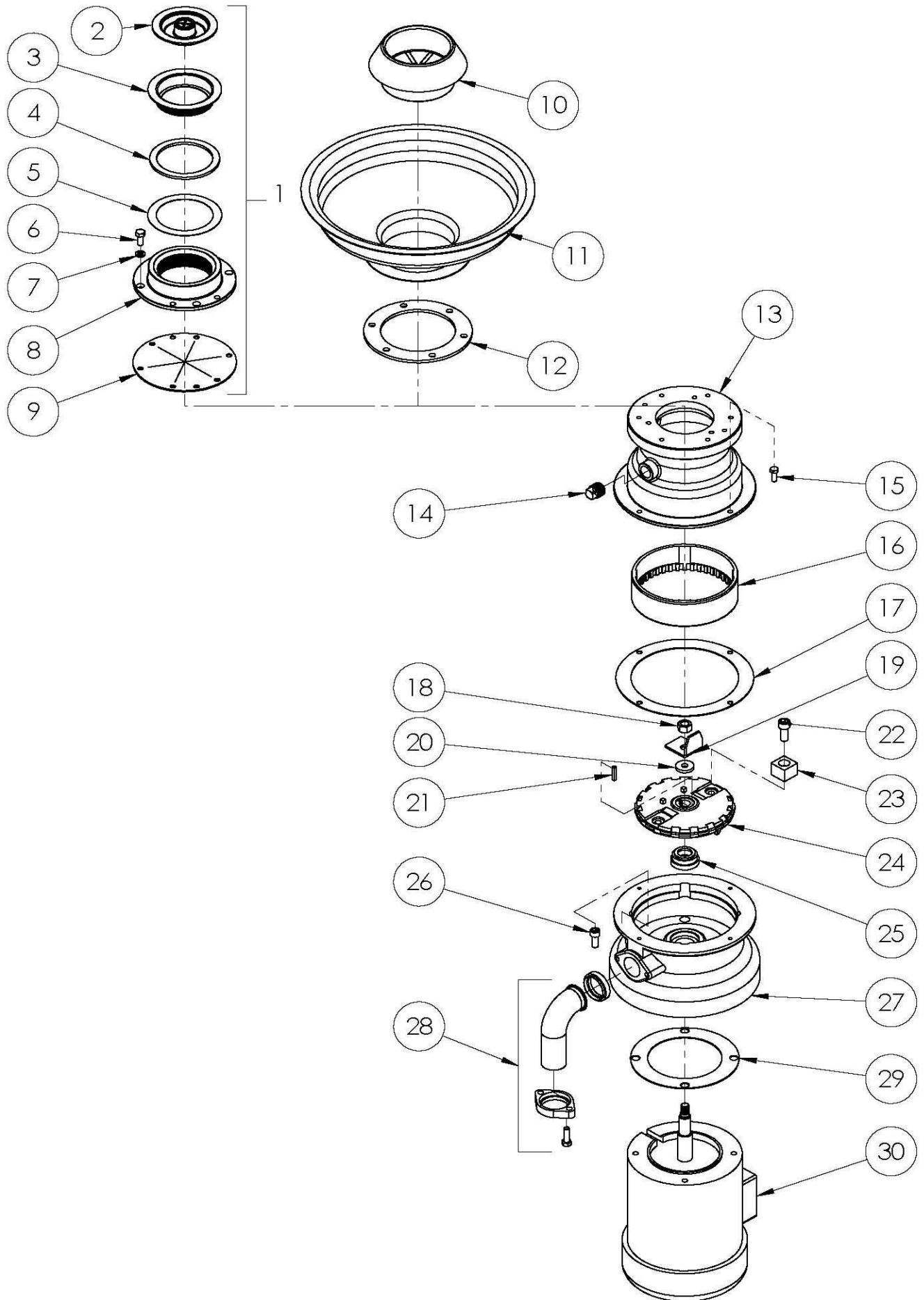


# F SERIES REPLACEMENT PARTS DIAGRAM



# F SERIES REPLACEMENT PARTS LIST

KEY NO. PART NO. NAME: DESCRIPTION/ QTY PER MACH.

KEY NO. PART NO. NAME: DESCRIPTION

1	30-H-RSA	RSA Head Assy (includes 2-9)	1
2	06-H-8	Sink Stopper:	1
3	27-H-15	Sink Mount: Threaded	1
4	07-H-19	Gasket: RSA Rubber	1
5	07-H-20	Gasket: RSA Fiber	1
6	08-H-21	Screw, Hxhd 5/16-18 x 3/4	6
7	08-HA-311	Washer: Lock Split 5/16	6
8	51-H-17	RSA Head	1
9	07-H-18	Gasket: Splash Guard	1
10	06-HA-ST4	Silver Saver: 4 1/2"	1
11		Cone (See Catalog)	
12	07-H-34	Gasket: Cone	1
13	00-289006	Housing: Upper Short	1
14	FP-066-02	Pipe Plug: 1/2"	1
15	SC-036-13	Screw: Hxhd. 1/4-20 x 3/4	4
16	00-201227	Ring: Shredder	1
17	G-6814	Gasket: Waste	1
18	NS-031-39	Stop Nut: 1/2-20 "Elastic"	1
19	00-201235	Cutter: Hi-Bulk	1
20	00-272003	Sealing Washer	1
21	00-203619-00001	Key: Shaft	1
22	00-202556-00001	Screw: SKHDCAP	2
23	00-201223-00003	Cutter: Flywheel 1/2	2
	00-201223-00001	Cutter: Flywheel 3/4	2
	00-201223-00004	Cutter: Flywheel 1-1/4	2
24	00-201250-00001	Flywheel	1
25	07-HA-83	Cartridge Seal	1
	04-HA-263	Install. Tool: FA Cartridge Seal	1
26	08-5-24.	Screw: Skhd 3/8-16 x3/4 Nyloc SS	4
27	51-H-2014	Housing: Lower	1
28	HD-SFK	Kit: Spout & Flange	1
29	07-HA-5	Gasket: Motor/ Base	1

**NOT SHOWN**

00-289004-00001	Upper Housing & Shredder Ring Assy. (Incl. 6,7,13,14,16)
40-HA-507	Motor Seal Kit (Incl. 25 & 29)

**MOTOR OPTIONS**

30	F-001235060	Motor: 1/2HP/3PH/50 & 60HZ	1
	F-001215060	Motor: 1/2HP/1PH/50 & 60HZ	1
	F-003435060	Motor: 3/4HP/3PH/50 & 60HZ	1
	F-003415060	Motor: 3/4HP/1PH/50 & 60HZ	1
	F-011435060	Motor: 1-1/4HP/3PH/50 & 60HZ	1
	F-011415060	Motor: 1-1/4HP/1PH/50 & 60HZ	1