

FIGURE 2. HYDRA-EXTRACTOR® HE-6CC, EXPLODED VIEW

FIG. & ITEM #	DESCRIPTION	QTY.
2-	HYDRA-EXTRACTOR[®], MODEL HE-6CC	
-1	Drive Motor, 2 HP (41631) (ATTACHING PARTS)	1
-2	Key, 3/16" X 3/16" X 1-5/8" Lg.	1
-3	Bolt, Hex Hd., Cad Pl., 3/8-16 X 3/4" Lg.	4
-4	Washer, Lock, Cad Pl., 3/8" ID ---*---	4
-5	Reducer, 2HP (51687-3) (ATTACHING PARTS)	1
-6	Bolt, Hex Hd., Cad Pl., 3/8-16 X 1" Lg.	1
-7	Washer, Flat, 3/8" ID X 2" OD (89200)	1
-8	Screw, Machine, Hex Hd., Cad Pl., 3/8-16 X 1-1/4" Lg.	4
-9	Washer, Lock, Cad Pl., 3/8" ID	4
-10	Nut, Hex, Cad Pl., 3/8-16 ---*---	4
-11	Head Assembly, S/S (89306) (ATTACHING PARTS)	4
-12	Screw, Hex Hd., 5/16-18 X 1/2" Lg., S/S	4
-13	Washer, Lock, 5/16" ID, S/S	4
-14	Nut, Hex, Cad Pl., 3/8-16 ---*---	4
-15	Screen Assembly (54005) (ATTACHING PARTS)	1*
-16	Screw, Button Hd., Socket Type, 5/16-18 X 1" Lg., S/S	2
-17	Washer, Lock, 5/16" ID, Split Type, S/S	2
-18	Nut, Hex, 5/16-18, S/S ---*---	2
-19	Screw Assembly, Extractor (86820)	1*
-20	Brush, Nylon (16000)	1
-21	Key, 3/8 X 3/8 X 3" Lg.	1
-22	Plug Cutter, Adjustable, Two Piece (80110-1) (ATTACHING PARTS)	1*
-23	Screw, Machine, Hex Hd., 3/8-16 X 1-1/2" Lg., S/S	4
-24	Washer, Lock, 3/8" Split Type, S/S	4
-25	Nut, Hex, 3/8-16 S/S ---*---	4
-26	Bushing, Lower, Screw Shaft (81350)	1*
-27	Shell Weldment (89306)	1
-28	Gasket, Pulper to Hydra-Extractor Opened or Closed (82784) (ATTACHING PARTS)	1
-29	Screw, Hex Hd., 1/4-20 X 1" Lg., S/S	6
-30	Nut, Hex, 1/4-20, S/S	6
-31	Washer, Lock, 1/4" Split Type, S/S ---*---	6
-32	Overflow Reducer, 1-1/2" X 1" (51650)	1

FIG. & ITEM #	DESCRIPTION	QTY.
-33	Overflow Reducer, 1" X 3/4" (51645)	1
-34	Cover, Access (80020)	1
-35	Lid Fastener (35202-1)	1
-36	Vibration Isolator, Rubber (16200)	2
-37	Leg (39706)	2
-38	Drain Plug (20385)	1
-39	Pin, Bottom (81055)	1*
-40	Gasket, Bottom Plate (82786)	1
-41	Bottom Pin (81025)	1*
	(ATTACHING PARTS)	
-42	Washer, Flat, 1/2" ID, Cad Pl.	1
-43	Screw, Hex Hd., Mach., 1/2-13 X 1" Lg., Cad Pl.	1
-44	Screw, Hex Hd., 3/8-16 X 1" Lg., Cad Pl.	6
-45	Washer, Flat, 3/8" ID, Cad Pl.	6
-46	Nut, Hex, 3/8-16, Cad Pl.	6
	---*---	
-47	Discharge Chute (81531)	1
	(ATTACHING PARTS)	
-48	Screw Rd. Hd., #10-32 X 3/4" Lg. S/S	2
-49	Nut, Hex #10-32, S/S, Elastic Stop	2
	---*---	
-50	Magnetic Switch (54999-1)	1
	(ATTACHING PARTS)	
-51	High Energy Magnet (55007)	1
-52	Screw, Rd. Hd., #6-32 X 2-1/4" Lg., Cad Pl.	2
-53	Washer, Flat, #6, S/S	2
-54	Nut, Hex, #6-32, S/S, Elastic Stop	2

* Recommended Spare Parts

S/S - Stainless Steel

**COMPONENT LIST
& ITEM NO'S.**

DESCRIPTION

REQ.

4- *PIPING COMPONENTS FOR HE-6CC HYDRA-EXTRACTOR®*

HE-6CC FRESH HOT WATER ASSEMBLY

-1	Gate Valve, 1/2" (64803)	1
-2	Backflow Preventor, 1/2" (11310)	1
-3	Shock Arrestor, 1/2" (11303)	1
-4	Solenoid Valve, 1/2" (64710-2)	1

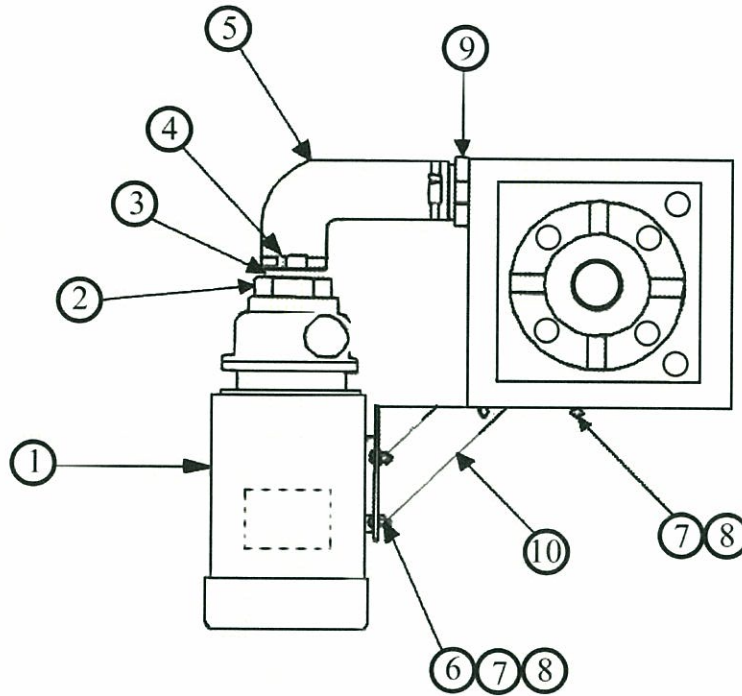


FIGURE 3. RETURN PUMP ASSEMBLY

FIG. & INDEX NO.	DESCRIPTION	REQ.
3-1	Pump – 2 HP. K/W (Refer to Pump Section) (85610-2)	1
-1a.	Pump- Leeson (41653)	1
-1b	Pump- MP Pump (34637)	1
-2	Bushing, 2-1/2 X 2 (18370)	1
-3	Pipe, 2" Dia. X 2" Lg. T.O.E. (43100)	1
-4	Clamp (21870)	2
-5	Elbow, Rubber, 2-1/4" I.D., (26805-1)	1
-6	Screw, Hex Hd., 5/16 - 18 X 1" Lg. S/S	4
-7	Washer, Lock, 5/16 Split Type, S/S	7
-8	Nut, Hex, 5/16 - 18, S/S	7
-9	Bulkhead Fitting 1-1/2" NPT, SCH 40 (31200)	1
-10	Pump Bracket (80950)	1

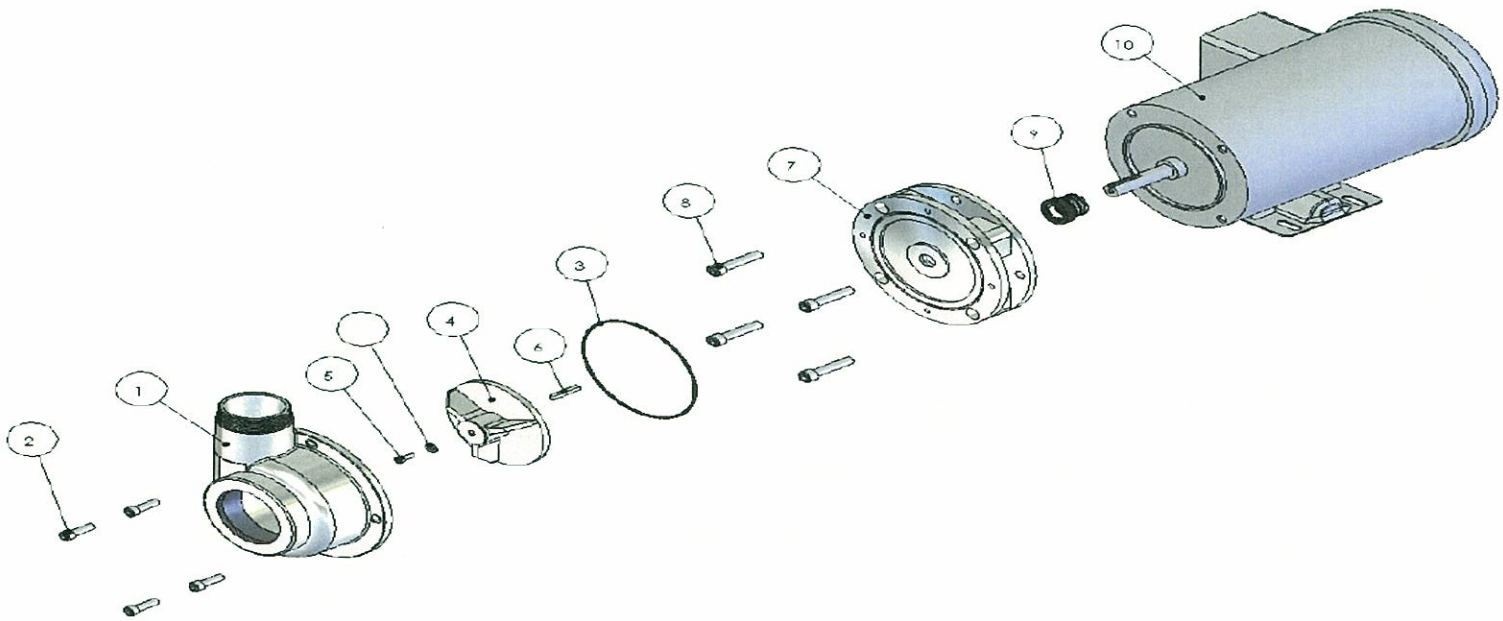


FIGURE 2. KW DIRECT DRIVE PUMP EXPLODED VIEW

FIG AND INDEX NO.	DESCRIPTION	REQ.
2-	<i>PUMP ASSEMBLY, K/W DIRECT DRIVE</i>	
-1	Housing, Pump (83200-2) (ATTACHING PARTS)	1
-2	Screw, Socket Head, 5/16-18 x 3/4" Lg. ---*---	4
-3	"O" Ring (45700)	1
-4	Impeller, 2HP (84153-2), 3HP (84152-2), 5HP (84151-2) (ATTACHING PARTS)	1*
-5	Screw, Socket Head, #10-32 x 5/8" Lg.	1
-6	Key, 3/16 x 3/16 x 1-1/8" Lg. ---*---	1
-7	Ring, Spacer, 2HP and 3HP (86300-2), 5HP (86301-2) (ATTACHING PARTS)	1
-8	Screw, Socket Head, 3/8-16 x 1-3/4" Lg. ---*---	4
-9a	Seal, Mechanical, 5/8" 2HP and 3HP (54300)	1*
-9b	Seal, Mechanical, 7/8" 5HP (54302)	1*
-10a	Motor, 2HP (41640)	1
-10b	Motor, 3HP (41652)	1
-10c	Motor, 5HP (41708)	1
-10d	Motor, Leeson (41653)	1

* Recommended Spare Parts