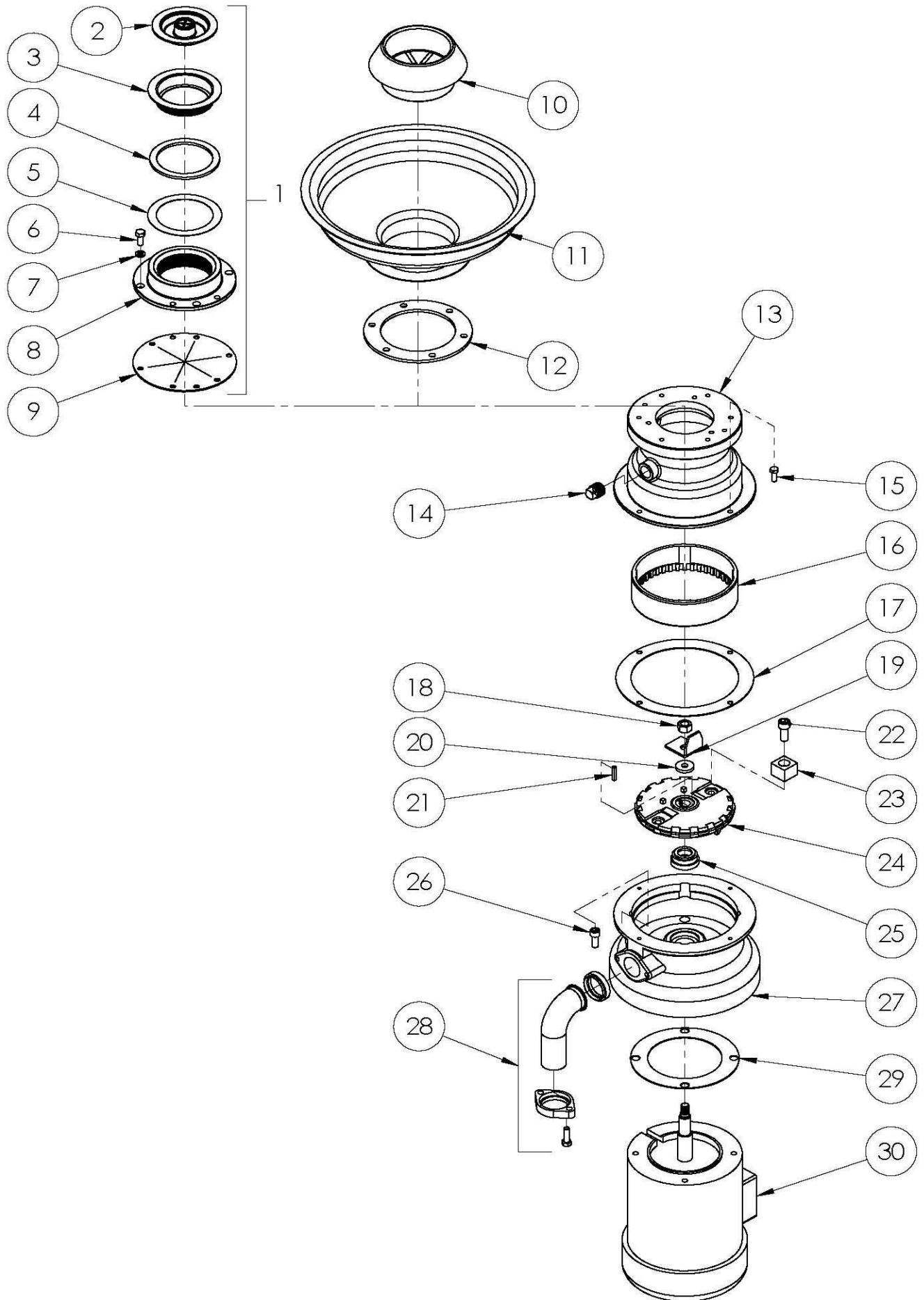


F SERIES REPLACEMENT PARTS DIAGRAM



F SERIES REPLACEMENT PARTS LIST

KEY NO. PART NO. NAME: DESCRIPTION/ QTY PER MACH.

KEY NO. PART NO. NAME: DESCRIPTION

| | | | |
|----|-----------------|----------------------------------|---|
| 1 | 30-H-RSA | RSA Head Assy (includes 2-9) | 1 |
| 2 | 06-H-8 | Sink Stopper: | 1 |
| 3 | 27-H-15 | Sink Mount: Threaded | 1 |
| 4 | 07-H-19 | Gasket: RSA Rubber | 1 |
| 5 | 07-H-20 | Gasket: RSA Fiber | 1 |
| 6 | 08-H-21 | Screw, Hxhd 5/16-18 x 3/4 | 6 |
| 7 | 08-HA-311 | Washer: Lock Split 5/16 | 6 |
| 8 | 51-H-17 | RSA Head | 1 |
| 9 | 07-H-18 | Gasket: Splash Guard | 1 |
| 10 | 06-HA-ST4 | Silver Saver: 4 1/2" | 1 |
| 11 | | Cone (See Catalog) | |
| 12 | 07-H-34 | Gasket: Cone | 1 |
| 13 | 00-289006 | Housing: Upper Short | 1 |
| 14 | FP-066-02 | Pipe Plug: 1/2" | 1 |
| 15 | SC-036-13 | Screw: Hxhd. 1/4-20 x 3/4 | 4 |
| 16 | 00-201227 | Ring: Shredder | 1 |
| 17 | G-6814 | Gasket: Waste | 1 |
| 18 | NS-031-39 | Stop Nut: 1/2-20 "Elastic" | 1 |
| 19 | 00-201235 | Cutter: Hi-Bulk | 1 |
| 20 | 00-272003 | Sealing Washer | 1 |
| 21 | 00-203619-00001 | Key: Shaft | 1 |
| 22 | 00-202556-00001 | Screw: SKHDCAP | 2 |
| 23 | 00-201223-00003 | Cutter: Flywheel 1/2 | 2 |
| | 00-201223-00001 | Cutter: Flywheel 3/4 | 2 |
| | 00-201223-00004 | Cutter: Flywheel 1-1/4 | 2 |
| 24 | 00-201250-00001 | Flywheel | 1 |
| 25 | 07-HA-83 | Cartridge Seal | 1 |
| | 04-HA-263 | Install. Tool: FA Cartridge Seal | 1 |
| 26 | 08-5-24. | Screw: Skhd 3/8-16 x3/4 Nyloc SS | 4 |
| 27 | 51-H-2014 | Housing: Lower | 1 |
| 28 | HD-SFK | Kit: Spout & Flange | 1 |
| 29 | 07-HA-5 | Gasket: Motor/ Base | 1 |

NOT SHOWN

| | |
|-----------------|--|
| 00-289004-00001 | Upper Housing & Shredder Ring Assy. (Incl. 6,7,13,14,16) |
| 40-HA-507 | Motor Seal Kit (Incl. 25 & 29) |

MOTOR OPTIONS

| | | | |
|----|-------------|------------------------------|---|
| 30 | F-001235060 | Motor: 1/2HP/3PH/50 & 60HZ | 1 |
| | F-001215060 | Motor: 1/2HP/1PH/50 & 60HZ | 1 |
| | F-003435060 | Motor: 3/4HP/3PH/50 & 60HZ | 1 |
| | F-003415060 | Motor: 3/4HP/1PH/50 & 60HZ | 1 |
| | F-011435060 | Motor: 1-1/4HP/3PH/50 & 60HZ | 1 |
| | F-011415060 | Motor: 1-1/4HP/1PH/50 & 60HZ | 1 |