



SPC-50S

WASTE REDUCTION SYSTEM



The **Somat SPC-50S** Waste Reduction System processes up to 900 lbs. of food service waste per hour providing an economic and efficient answer to cutting the high and ever increasing costs associated with waste handling. Somat Pulping Systems are engineered to reduce foodservice waste volume by an 8 to 1 reduction (up to 85%.) Compostable waste enters the pulping tank via the feed tray or scrapping trough where it mixes with water and is ground into a slurry. The slurry is fed to the Hydra-Extractor® for de-watering and the result is a semi-dry pulp discharged into a haul-away container or a Somat Dehydrator for additional reduction. The extracted water is recovered and returned to the pulping tank for re-use.

STANDARD FEATURES

- Hinged lid pulper with limit switch
- Hydra-Extractor
- 3 HP recirculating slurry pump
- Valve package
- Chemical additive pump
- Som-A-Trol control panel
- Push button station
- Discharge chute with limit switch

TECHNICAL SPECIFICATIONS

Pulper:

- 23" diameter, 39" high max (legs fully extended)
- Polished stainless steel tank
- Water flushed feed tray
- Hinged lid with limit switch
- ½" stainless slurry chamber
- 5 HP TEFC direct drive motor
- Internal collection box
- Replaceable Hypoint cutting blades

Hydra-Extractor

- Welded stainless steel construction
- Stainless steel adjustable legs
- 2 HP TEFC drive motor
- 20:1 gear reducer
- 3HP TEFC recirculating pump
- Chemical pump
- 6" stainless steel auger
- Reinforced stainless steel screens
- Automatic shutdown timer
- Automatic rinse system

Valve Package:

- All valves required for operation including fresh water, tray flush and drain lines.

Som-A-Trol Electrical Control Panel:

- UL approved. Include all electrical components prewired to a terminal strip. Water level control timer and push button station, all in a NEMA 4 stainless steel panel.

OPTIONS

- Water flushed feed tray
- Trough feed connection
- Feed tray cover
- Prison package
- Under dish table unit
- Vibration pads

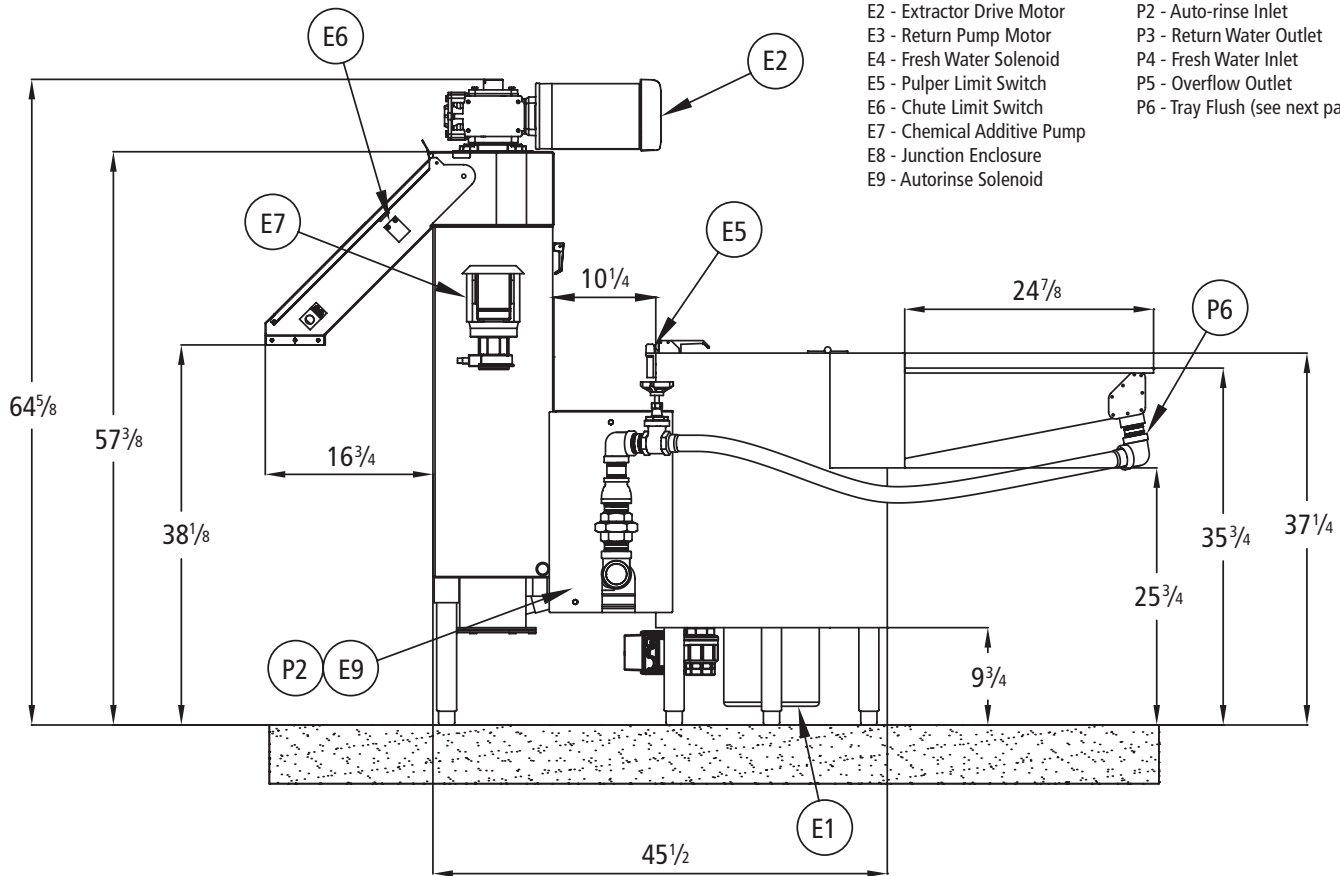
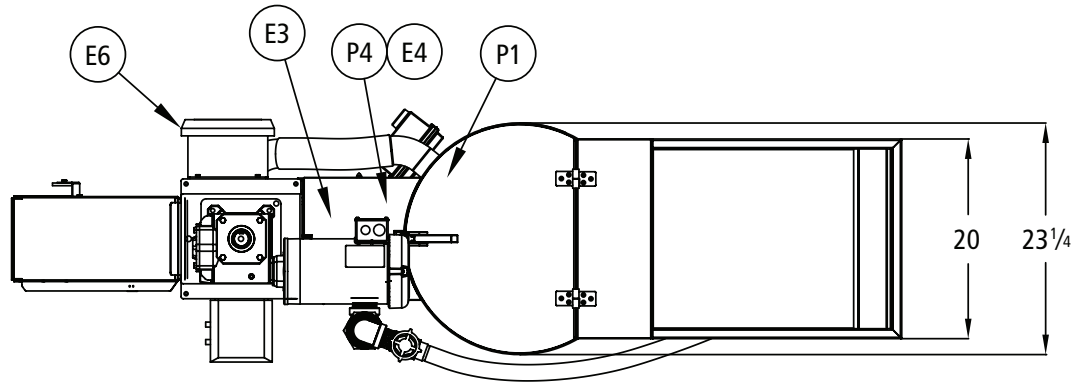
VOLTAGE OPTIONS

- 208/60/3
- 230/60/3
- 460/60/3
- International options available, consult factory

The Power to Transform WASTEFUL to SUSTAINABLE

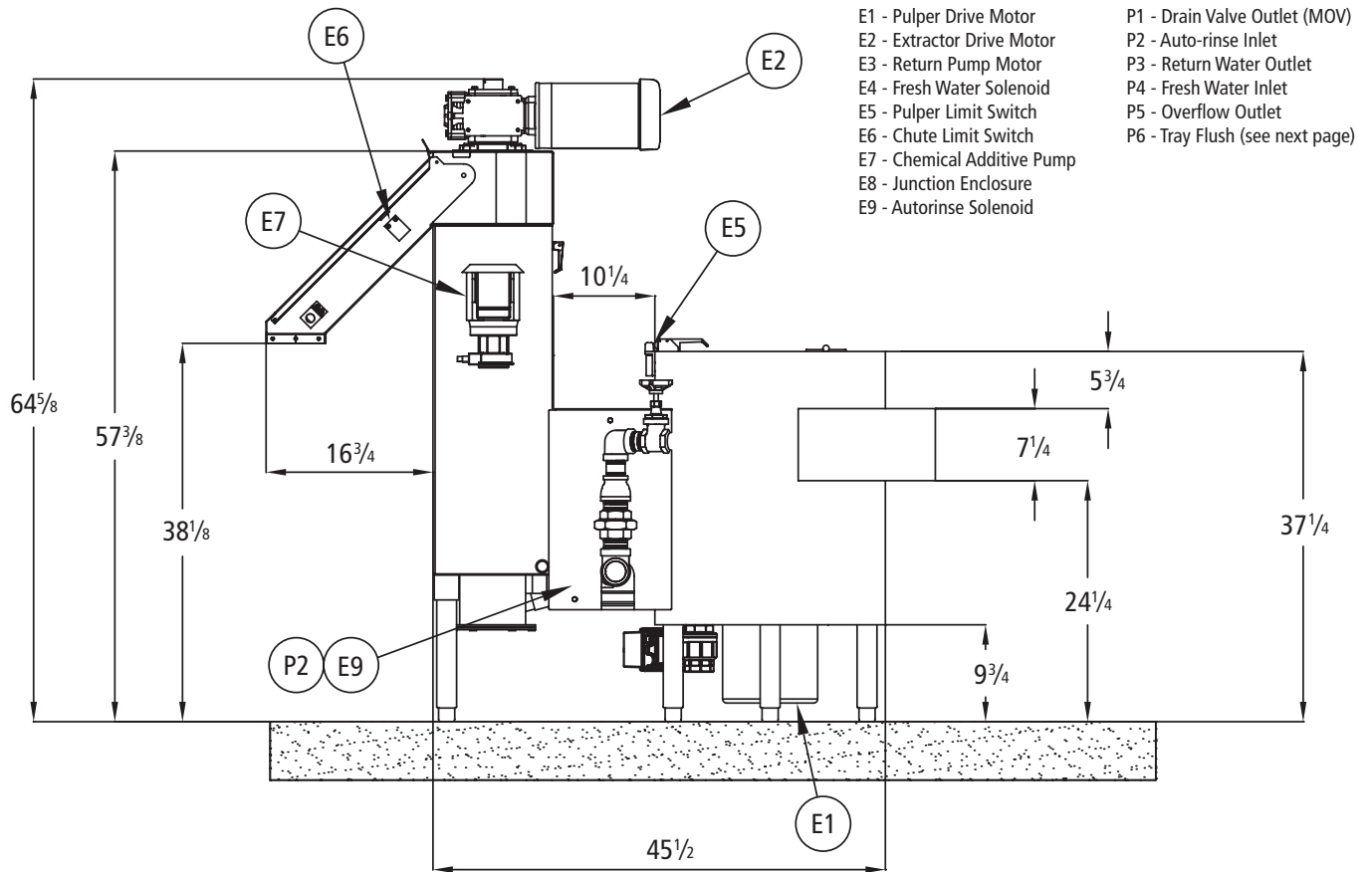
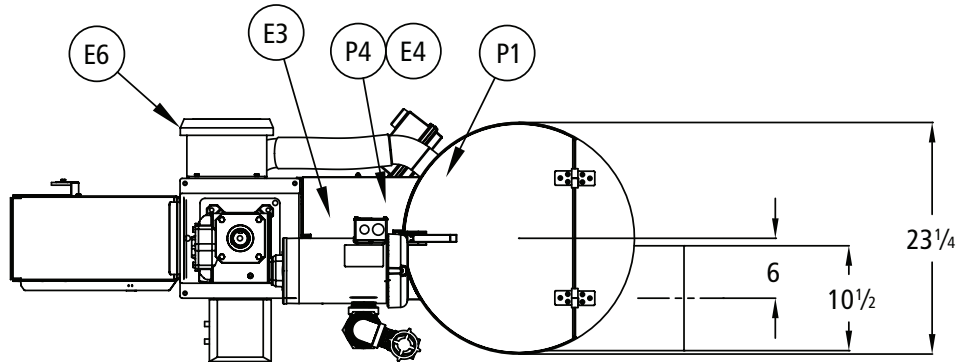
SPC-50S

HIGH TANK WITH TRAY FEED



- E1 - Pulper Drive Motor
- E2 - Extractor Drive Motor
- E3 - Return Pump Motor
- E4 - Fresh Water Solenoid
- E5 - Pulper Limit Switch
- E6 - Chute Limit Switch
- E7 - Chemical Additive Pump
- E8 - Junction Enclosure
- E9 - Autorinse Solenoid
- P1 - Drain Valve Outlet (MOV)
- P2 - Auto-rinse Inlet
- P3 - Return Water Outlet
- P4 - Fresh Water Inlet
- P5 - Overflow Outlet
- P6 - Tray Flush (see next page)

SPECIFICATIONS							
Total Height	Tank Height	Length	Width	Equipment Weight	Operating Weight	Crated Weight	Crated Volume
65" (1,651 mm)	37.25" (946 mm)	83" (2,100 mm)	23.25" (591 mm)	725 lbs. (329 kg)	890 lbs. (404 kg)	1,000 lbs. (454 kg)	167 cu. ft.

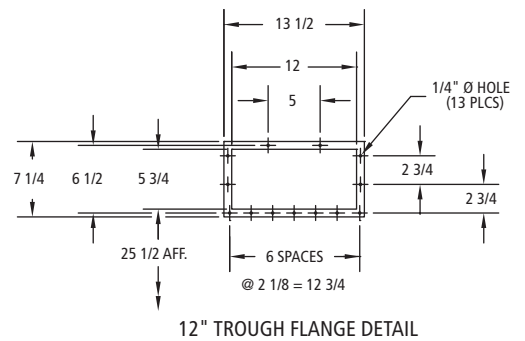
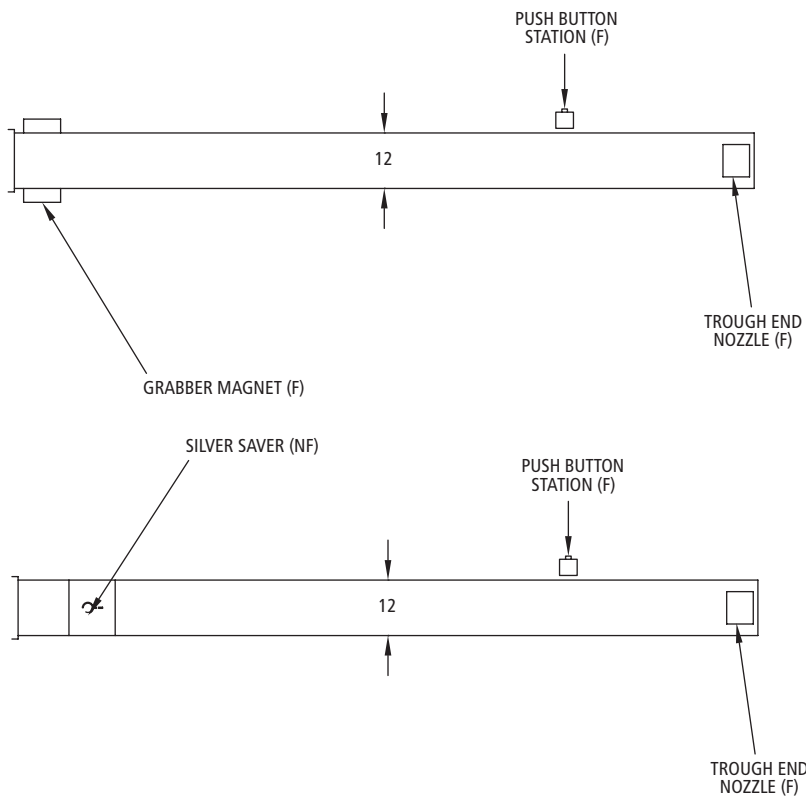
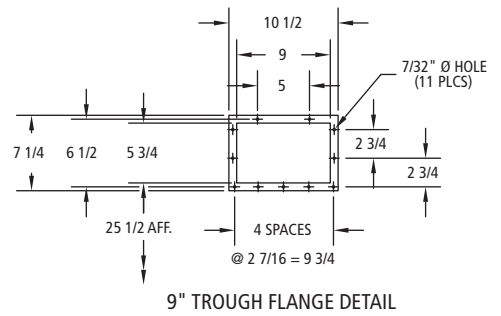
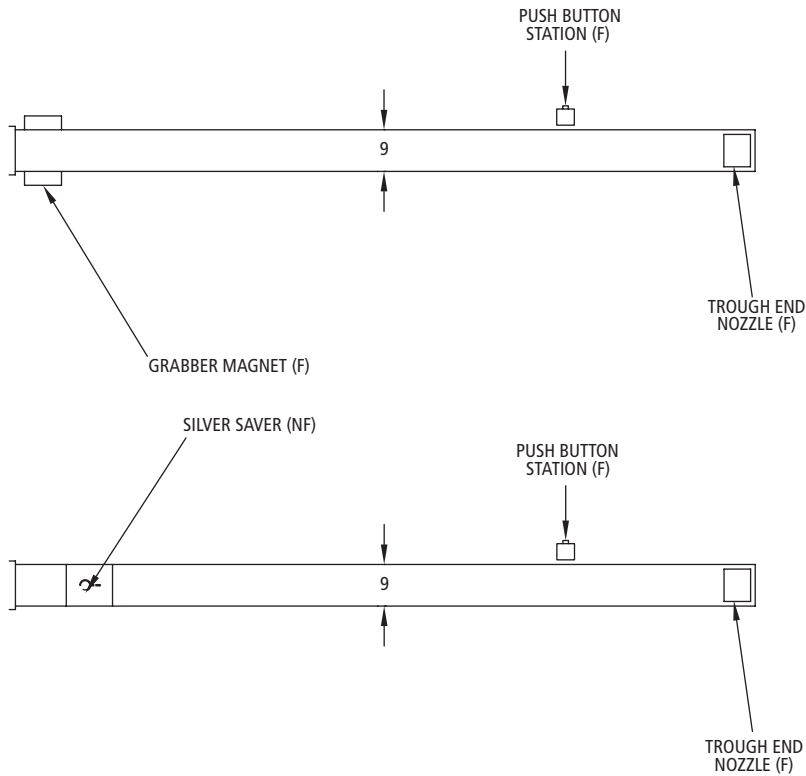


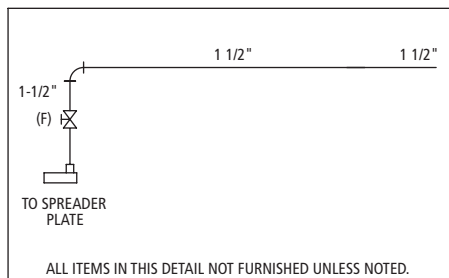
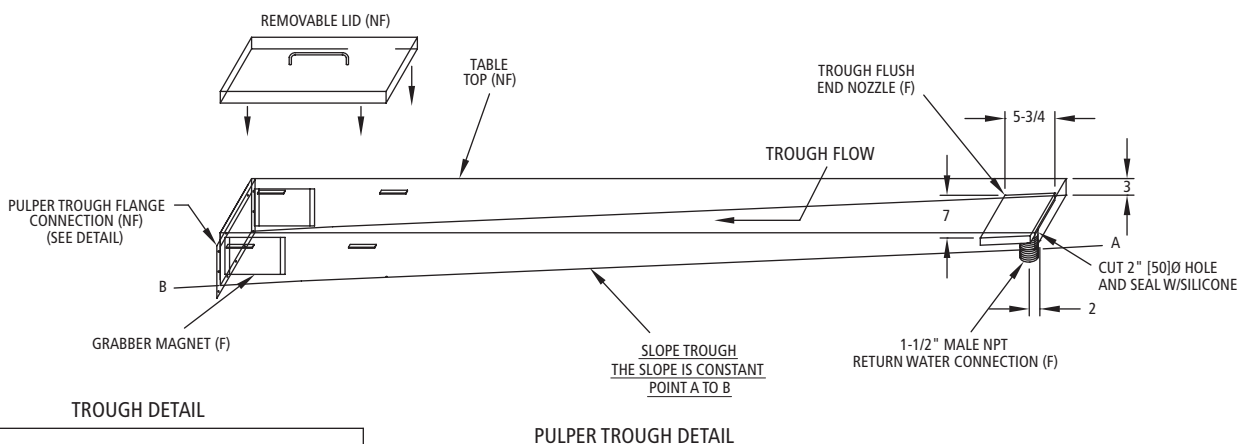
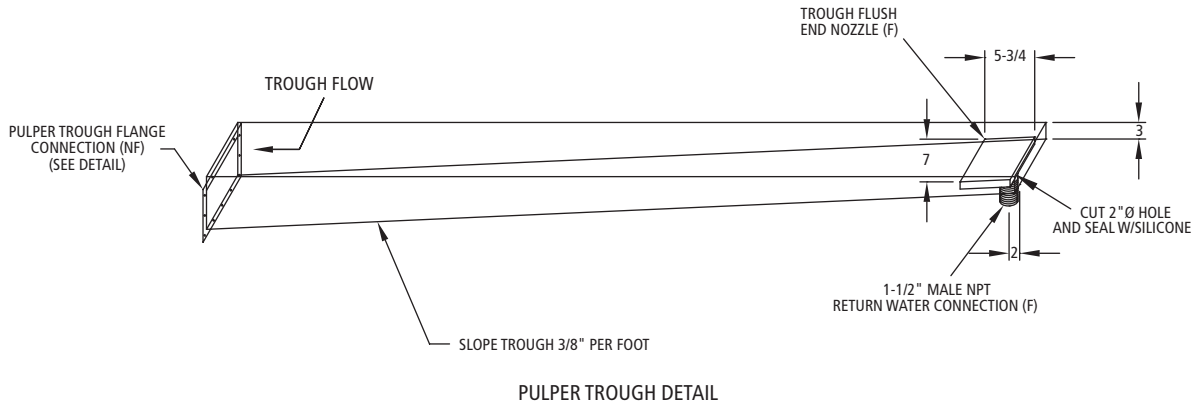
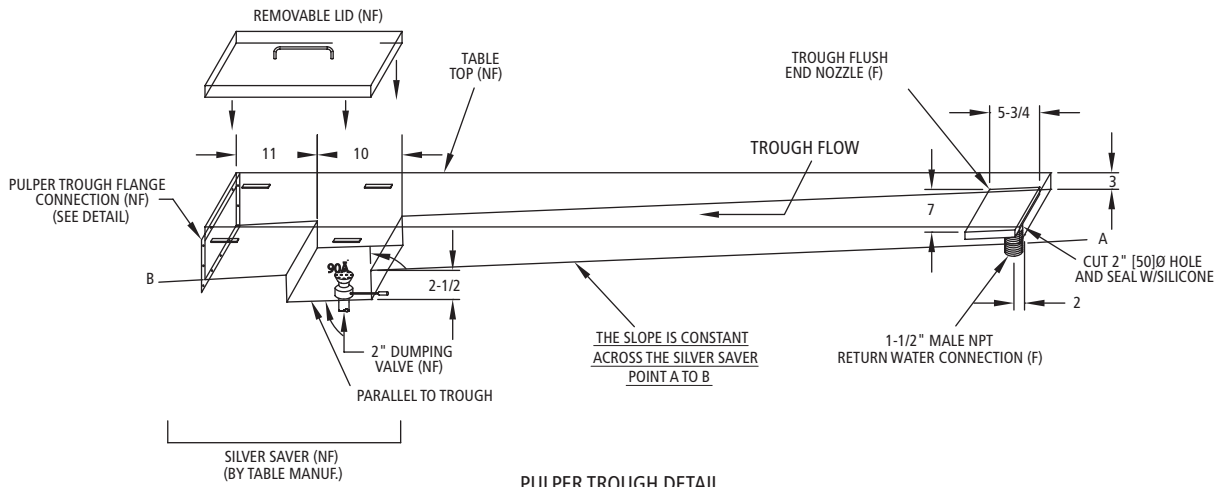
- E1 - Pulper Drive Motor
- E2 - Extractor Drive Motor
- E3 - Return Pump Motor
- E4 - Fresh Water Solenoid
- E5 - Pulper Limit Switch
- E6 - Chute Limit Switch
- E7 - Chemical Additive Pump
- E8 - Junction Enclosure
- E9 - Autorinse Solenoid
- P1 - Drain Valve Outlet (MOV)
- P2 - Auto-rinse Inlet
- P3 - Return Water Outlet
- P4 - Fresh Water Inlet
- P5 - Overflow Outlet
- P6 - Tray Flush (see next page)

SPECIFICATIONS							
Total Height	Tank Height	Length	Width	Equipment Weight	Operating Weight	Crated Weight	Crated Volume
65" (1,651 mm)	37.25" (946 mm)	83" (2,100 mm)	23.25" (591 mm)	725 lbs. (329 kg)	890 lbs. (404 kg)	1,000 lbs. (454 kg)	167 cu. ft.

SPC-50S

WASTE REDUCTION SYSTEM



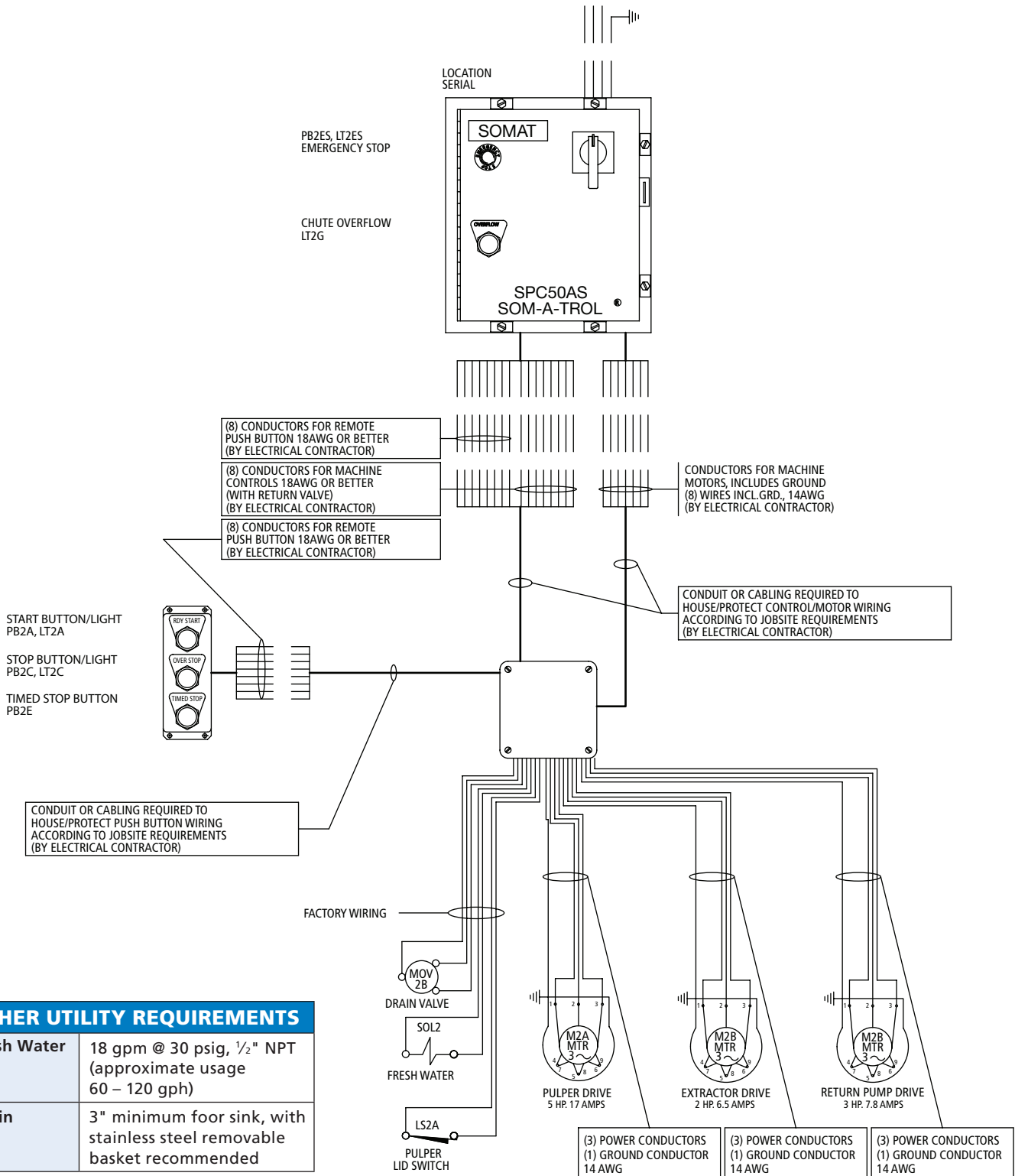


SPC-50S

WASTE REDUCTION SYSTEM



CUSTOMER POWER SUPPLY
(BY ELECTRICAL CONTRACTOR)
208V-3Ø-60Hz-20AMPS



OTHER UTILITY REQUIREMENTS

Fresh Water	18 gpm @ 30 psig, 1/2" NPT (approximate usage 60 – 120 gph)
Drain	3" minimum floor sink, with stainless steel removable basket recommended

