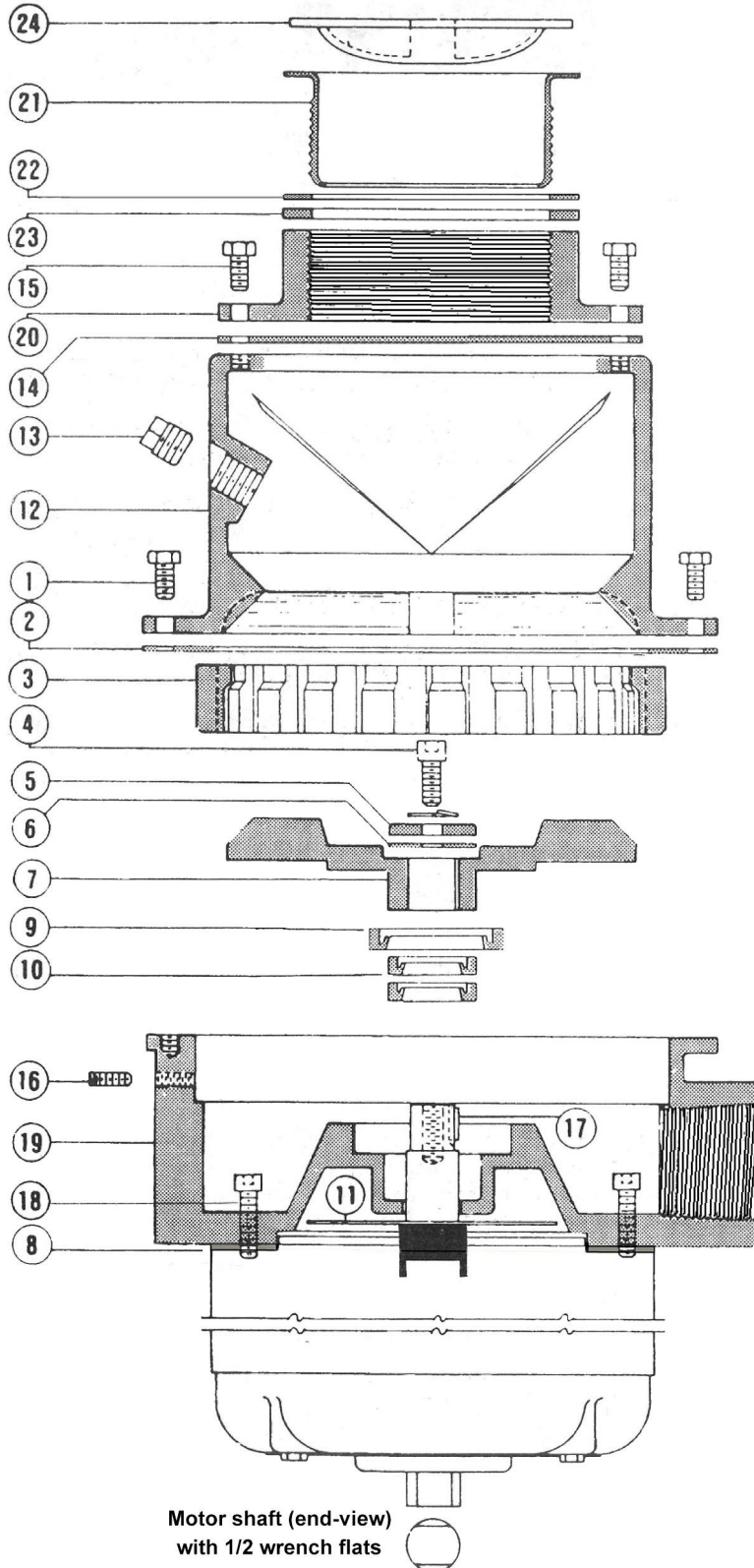


# Master Disposers

HEAVY DUTY FOODWASTE DISPOSERS

## SERIES D 6" ROTOR

### PARTS BREAKDOWN



| Item No. | Part No. |
|----------|----------|
|----------|----------|

Numbers in parenthesis are total required quantities

|    |                           |         |
|----|---------------------------|---------|
| 1  | SCREWS/Waste Chamber (6)  | A-3300  |
| 2  | GASKET/Sizing Ring        | A-906   |
| 3  | SIZING RING               | A-902   |
| 4  | SCREW/Center Plate        | A-3400  |
| 5  | CENTER PLATE              | A-908   |
| 6  | GASKET/Center Plate       | A-907   |
| 7  | ROTOR TURNTABLE           | A-901NS |
| 8  | GASKET: MOTOR/BASE        | 07-HA-5 |
| 9  | LIP SEAL                  | A-920   |
| 10 | LIP SEALS/Motor Shaft (2) | A-911A  |
| 11 | SLINGER/Motor Shaft       | A-912   |
| 12 | WASTE CHAMBER             | A-903   |
| 13 | PLUG                      | 10-5-27 |
| 14 | SPLASHGUARD/GASKET        | 07-H-18 |
| 15 | SCREWS/Head (4)           | A-3301  |
| 16 | SET-SCREWS/Sizing Ring(2) | A-3309  |
| 17 | KEY                       | A-3310  |
| 18 | SCREWS/Motor (4)          | A-2202A |
| 19 | BOWL                      | A-900   |
| 20 | HEAD-Casting              | A-904   |
| 21 | CUP-Stainless             | 27-H-15 |
| 22 | GASKET-Fiber              | 07-H-20 |
| 23 | GASKET-Vinyl              | 07-H-19 |
| 24 | STOPPER                   | 06-H-8  |

#### MOTOR OPTIONS

|               |          |
|---------------|----------|
| - 1 HP / 1 PH | 02-D-111 |
| - 1 HP / 3 PH | 02-D-013 |
| - 2 HP / 1 PH | 02-D-021 |
| - 2 HP / 3 PH | 02-D-023 |

|                     |          |
|---------------------|----------|
| LOWER MOTOR BEARING | 02-5-400 |
| UPPER MOTOR BEARING | M-6305   |

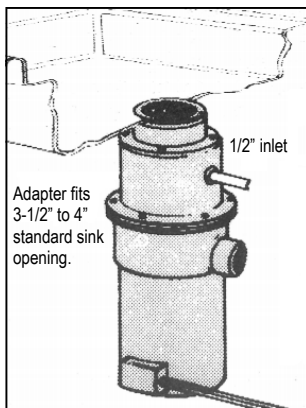
|                        |          |
|------------------------|----------|
| SEAL AND GASKET KIT    | D-SGK-NS |
| - INCLUDES ITEMS       |          |
| 2, 6, 8, 9, 10, GREASE |          |

|                                |          |
|--------------------------------|----------|
| COMPLETE RENEWAL KIT           | D-CRK-NS |
| - INCLUDES ITEMS               |          |
| 1, 2, 3, 4, 5, 6, 7, 8, 9, 10, |          |
| 11, GREASE                     |          |

# SERIES "D" PROCEDURE FOR COMPLETE PARTS REPLACEMENT

| DISASSEMBLY   |             | REASSEMBLY  |         |
|---|-------------|---|---------|
| DISASSEMBLE BY FOLLOWING THE STEPS BELOW IN ORDER   |             | REASSEMBLE DISPOSER COMPONENTS IN FOLLOWING ORDER   |         |
| STEP  | ITEM        | STEP  | ITEM    |
| <b>A SCREWS/Waste Chamber.</b> Remove 6 Screws, separating Bowl(19) from Chamber(12). Regardless of style of Head used, there is no need to remove Chamber when servicing unit  | 1           | <b>A LIP-SEALS/Shaft (Two).</b> Pack Seal cavities with waterproof grease. Press, open sides up into greased counterbore.   | 10      |
| <b>B SET-SCREWS/Sizing Ring (two).</b> Remove to free sizing ring.  | 16          | <b>B SLINGER/Motor Shaft.</b> Install replacement Slinger.  | 11      |
| <b>C SCREW/Center Plate—</b> with lock washer. Hold 1/2" flats on shaft extension beneath motor while removing Screw.   | 4           | <b>C MOTOR.</b> Before re-installing Motor, thoroughly clean the counterbore to accept Motor-Flange. Press greased shaft, with rotating motion, through the installed Lip-Seals. With Motor positioned as before, replace 4 Motor <b>SCREWS</b>   | 7<br>18 |
| <b>D CENTER PLATE.</b> Remove Plate and <b>GASKET/Center Plate.</b>   | 5&6         | <b>D LIP-SEAL.</b> Pack Seal cavity with waterproof grease. Press, open sides up, into greased counterbore.   | 9       |
| <b>E</b> Replace <b>SCREW/Center Plate (4)</b> in shaft-hole to protect threads. Hold shaft extension flats to replace screw.   |             | <b>E ROTOR TURNTABLE—</b> Place on shaft, aligning keyway slots in shaft & Rotor. Adjust Rotor so that the top of Rotor remains slightly above end of shaft. Insert <b>KEY</b> .  | 7<br>17 |
| <b>F</b> Insert two 3/8-16 screws in tapped holes in surface of Rotor turntable (7), leaving head-space for wheel puller.   |             | <b>F GASKET/Center Plate.</b> Place Gasket over center of shaft.  | 6       |
| <b>G</b> Tap gently with hammer around top surface of Ring (3) to loosen. Center a wheel puller on Screw (4). Then, using screws Inserted in Rotor Turntable, remove together:<br><b>GASKET/Sizing Ring</b><br><b>SIZING RING</b><br><b>ROTOR TURNTABLE</b> | 2<br>3<br>7 | <b>G CENTER PLATE.</b> Position the Plate on top of Gasket.   | 5       |
| <b>H KEY—</b> Remove from keyway  | 17          | <b>H SCREW/Center Plate—</b> with lock washer. Hold 1/2" flats on shaft extension when tightening screw in shaft. Center Plate will press Rotor down into its correct position. Shaft-top will be flush with recess in Rotor Turntable.   | 4       |
| <b>I SCREWS/Motor—</b> Remove to separate motor from Bowl(19).  | 18          | <b>I SIZING RING.</b> Press Ring, evenly, in Bowl(19) counterbore. Top of Ring will be positioned flush with top of Bowl. Replace two <b>SET SCREWS</b> in Bowl. Turn Ring so screws are spaced between raised bosses. Ring is secured with light contact of screws on wall. Do not tighten screws. | 3<br>16 |
| <b>J LIP-SEAL—</b> Remove from counterbore. Clean the counterbore.  | 9           | <b>J GASKET/Sizing Ring</b>   | 2       |
| <b>K LIP-SEALS/Shaft (two).</b> Remove from counterbore. Clean the counterbore thoroughly for acceptance of new Lip-Seals.  | 10          | <b>K SCREWS/Chamber.</b> Replace 6 screws to rejoin the chamber with the Bowl & Motor. Reassembly is then complete.   | 1       |
| At this disassembly-point, clean, polish, and inspect shaft in seal area.   |             |   |         |

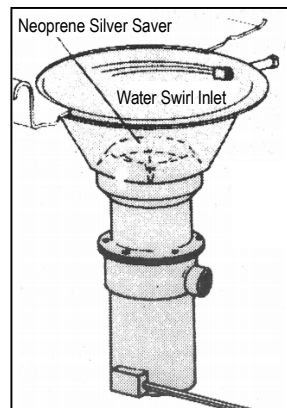
## TWO SERIES "D" DISPOSER HEAD STYLES ARE SHOWN BELOW



Adapter fits 3-1/2" to 4" standard sink opening.

**MODEL SK  
SINK ADAPTER HEAD**

| Item No.         | Part No. |
|------------------|----------|
| 20 HEAD-Casting  | A-904    |
| 21 CUP-Stainless | 27-H-15  |
| 22 GASKET-Fiber  | 07-H-20  |
| 23 GASKET-Vinyl  | 07-H-19  |
| 24 STOPPER       | 06-H-8   |



**MODEL BC  
BOWL/CONE HEAD**

| Item                | Part No. |
|---------------------|----------|
| 12" BOWL/CONE       | H-403    |
| 18" BOWL/CONE       | H-401    |
| SWIRL INLET 1/2"    | 10-5-701 |
| 8-1/4" SILVER SAVER | H-391    |

### Master Disposers

SOMAT COMPANY  
165 Independence Court, Lancaster, PA 17601  
717-397-5100 — FAX #717-299-4131  
800-237-6628 ext. 173 — www.masterdisposers.com

**TW Food Equipment Group**