



Item No: \_\_\_\_\_

**Somat Model : SPC-75S**



## Technical Specs:

**Pulper:** 30" diameter, 39.5" high polished stainless steel tank with water flushed feed tray, hinged lid with limit switch, 3/8" thick stainless steel slurry chamber, 7-1/2 HP TEFC direct drive motor, internal junk box and cutting mechanism, HyPoint cutting mechanism, stainless steel, consists of 1 piece security ring with 3 stationary, replaceable top cutters and impeller with 2 replaceable rotating cutters.

**Hydra-Extractor®:** Rigid stainless steel weldment with stainless steel legs, head assembly with 2 HP TEFC drive motor mounted to a 20:1 gear reducer, 17" long stainless steel discharge chute with limit switch, 3 HP TEFC recirculating pump and chemical additive pump. Water extracting mechanism consists of 6" diameter stainless steel screw with nylon brush edge, stainless steel plug cutter and matching 6" diameter reinforced stainless steel screen, automatic rinse system with automatic shutdown timer.

**Valve Package:** All valves required for proper operation (fresh water, tray flush and drain lines).

**Som-A-Trol® (Electrical Control Panel):** UL approved. Includes all necessary electrical components prewired to a terminal strip; water level control and push button station, in a NEMA 4 stainless steel enclosure.

### Options Available:

- Feed Trough Connection
- Feed Tray Cover
- Prison Package
- Under Dish Table Unit

**Electrical Characteristics:** 208/230/460 volt, 3 phase, 60 Hz.

**Capacity:** 1250 pounds per hour of food-service waste mix, consisting of food scraps, plastics, milk cartons, paper, aluminum foil and cardboard.

**Finish:** All exterior surfaces are polished stainless steel.

## DESCRIPTION:

Standard SOMAT® Model SPC-75S HT high tank, close-coupled pulper and Hydra-Extractor® with hinged lid and limit switch, water flushed feed tray, 3 HP recirculating pump, chemical additive pump, valve package, Som-A-Trol® control panel with water level control, push button station, and discharge chute with limit switch.

### Benefits:

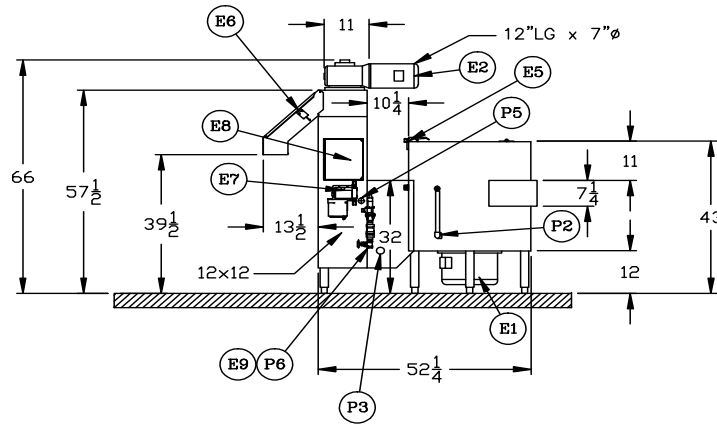
- As much as 8 to 1 (87.5%) volume reduction
- Reduced labor cost
- Better sanitation
- Water conservation
- Improved operator morale
- Reduced silverware loss

Processes a wide variety of waste

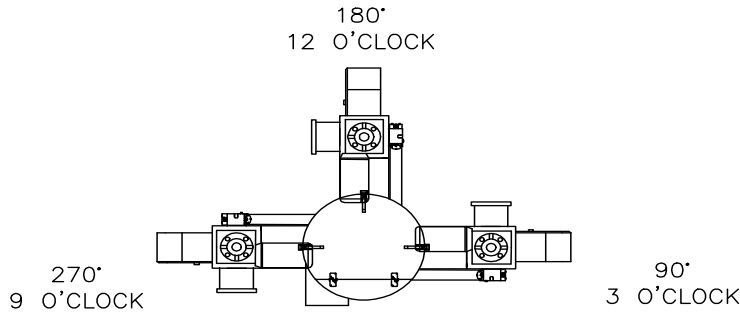
**Operation:** Foodservice waste enters the pulping tank via the feed tray where it mixes with water, is processed and made into a slurry. The slurry, consisting of 5% solids and 95% water, is automatically transported through a pipeline to the Hydra-Extractor®, where water is removed and the resultant semi-dry pulp is discharged into a haul-away container. The extracted water is recovered and returned to the pulping tank for re-use.

Somat equipment provides an economic and efficient answer to cutting the high and ever increasing costs associated with waste handling. Manufactured by Somat Company of Lancaster, Pennsylvania, originators of waste pulping systems and specialists in waste reduction technology.

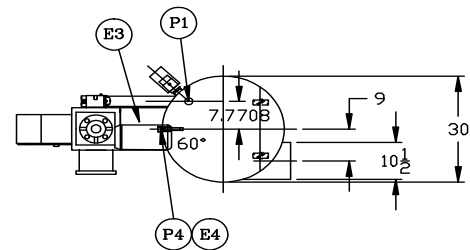
Somat Company—Division of ITW Food Equipment Group LLC  
165 Independence Ct., Lancaster, PA 17601 USA  
Phone: 717-397-5100 / 800-237-6628 Fax: 717-291-0877



SPC-75S (W/ 9" TANGENTIAL TROUGH ADAPTER) ELEVATION VIEW



OPTIONAL SPC-75S LAYOUT CONFIGURATIONS



SPC-75S (W/ 9" TANGENTIAL TROUGH ADAPTER) PLAN VIEW

### Utility Connections

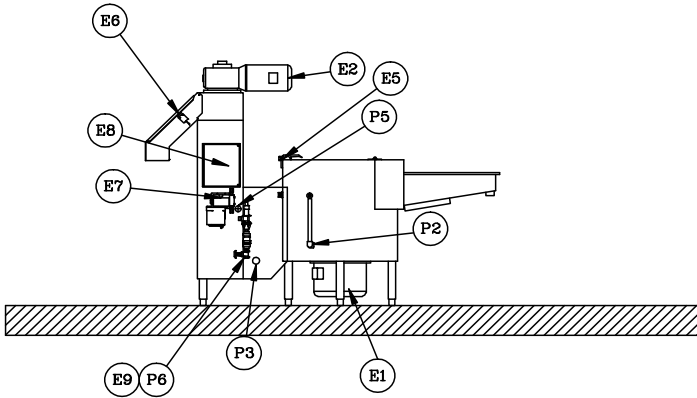
<b>E1- Pulper Drive Motor</b>	<b>P1- Drain Valve Outlet (MOV)</b>
<b>E2- Extractor Drive Motor</b>	<b>P2- Stand Pipe</b>
<b>E3- Return Pump Motor</b>	<b>P3- Return Water Outlet</b>
<b>E4- Fresh Water (cold) Solenoid</b>	<b>P4- Fresh Water Inlet Cold water: 1/2"NPT</b>
<b>E5- Pulper Limit Switch</b>	<b>P5- Overflow Outlet: 1-1/2"</b>
<b>E6- Chute Limit Switch</b>	<b>P6- Tray Flush (see next page)</b>
<b>E7- Chemical Additive Pump</b>	<b>P7- Autorinse Inlet Hot water : 1/2"NPT</b>
<b>E8- Junction Enclosure</b>	
<b>E9- Autorinse (hot) Solenoid</b>	



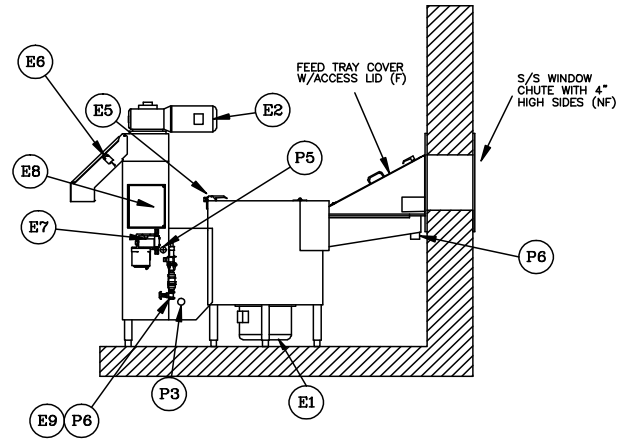
# SPC-75S Close Coupled Pulping System

## Tray Options

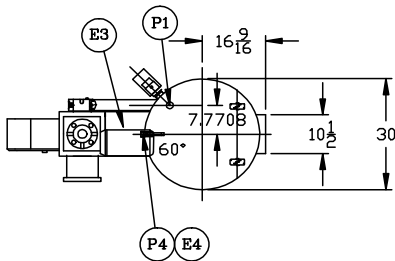
Radial & Tangential Positions 9" & 12" sizes



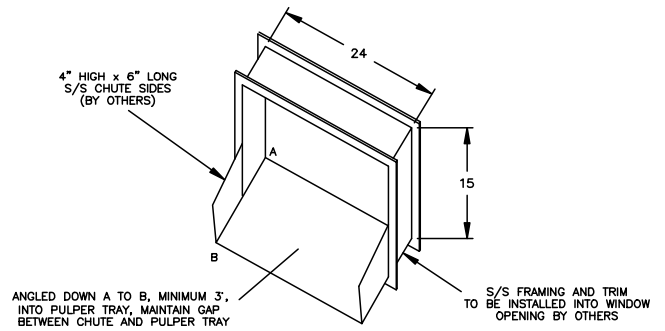
SPC-75S (W/ TRAY ADAPTER)  
ELEVATION VIEW



SPC-75S W/ OPTIONAL PASS THRU WINDOW  
ELEVATION VIEW



SPC-75S (W/ TRAY ADAPTER)  
PLAN VIEW



TYPICAL PASS THRU WINDOW DETAIL

### Dimensions

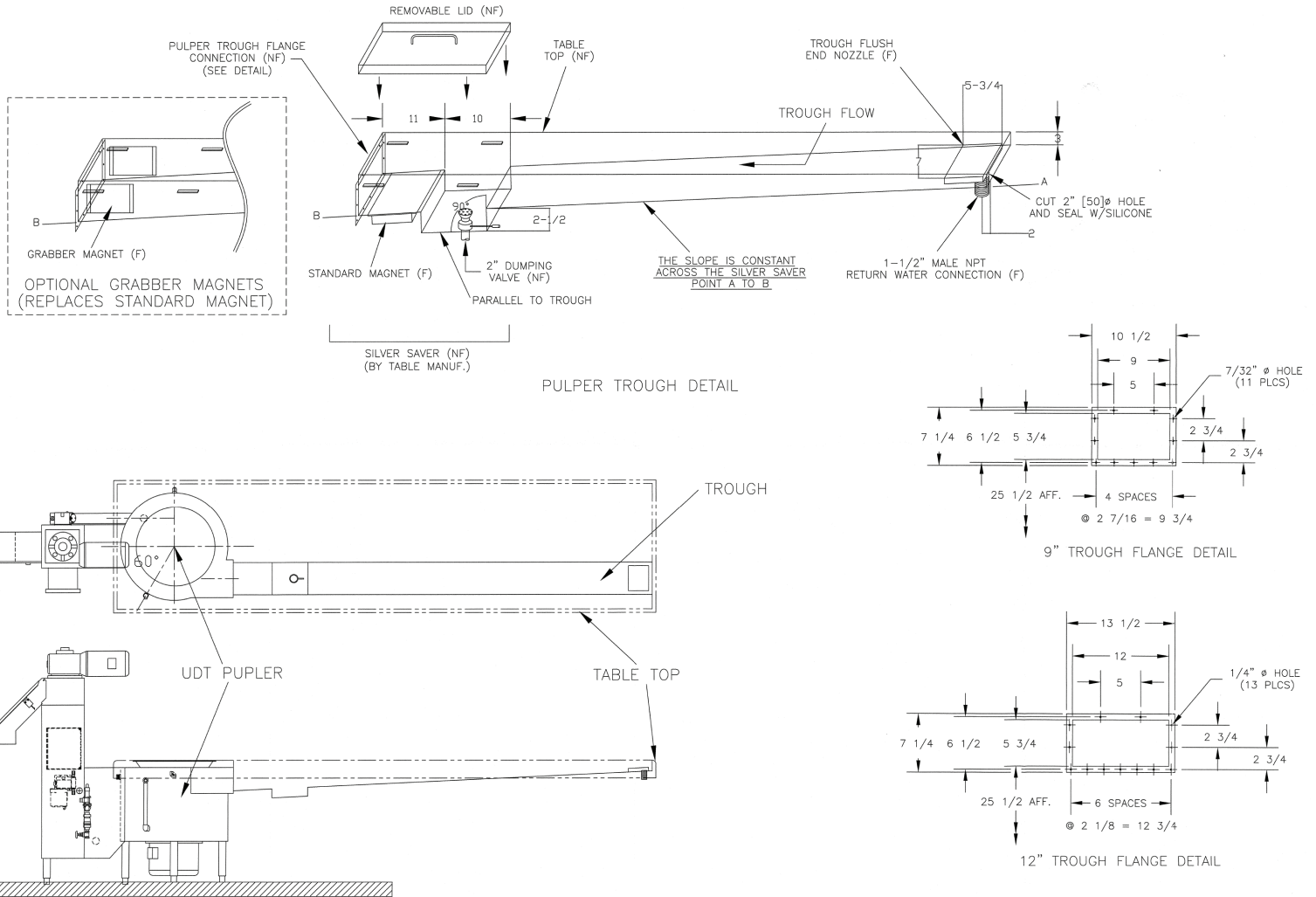
<b>Total Height:</b> 66" (1677mm)	<b>Equipment weight:</b> 900 lbs. (408kg)
<b>Tank Height:</b> 43" (1093mm)	<b>Operating weight:</b> 1155 lbs. (524kg)
<b>Length:</b> 67.25" (1709)	<b>Crated weight:</b> 1175 lbs. (533kg)
<b>Width:</b> 30" (762mm)	<b>Crated volume:</b> 167 cu. ft.



# SPC-75S Close Coupled Pulping System

## UDT Specs / Trough Options

Radial & Tangential Positions 9" & 12" sizes

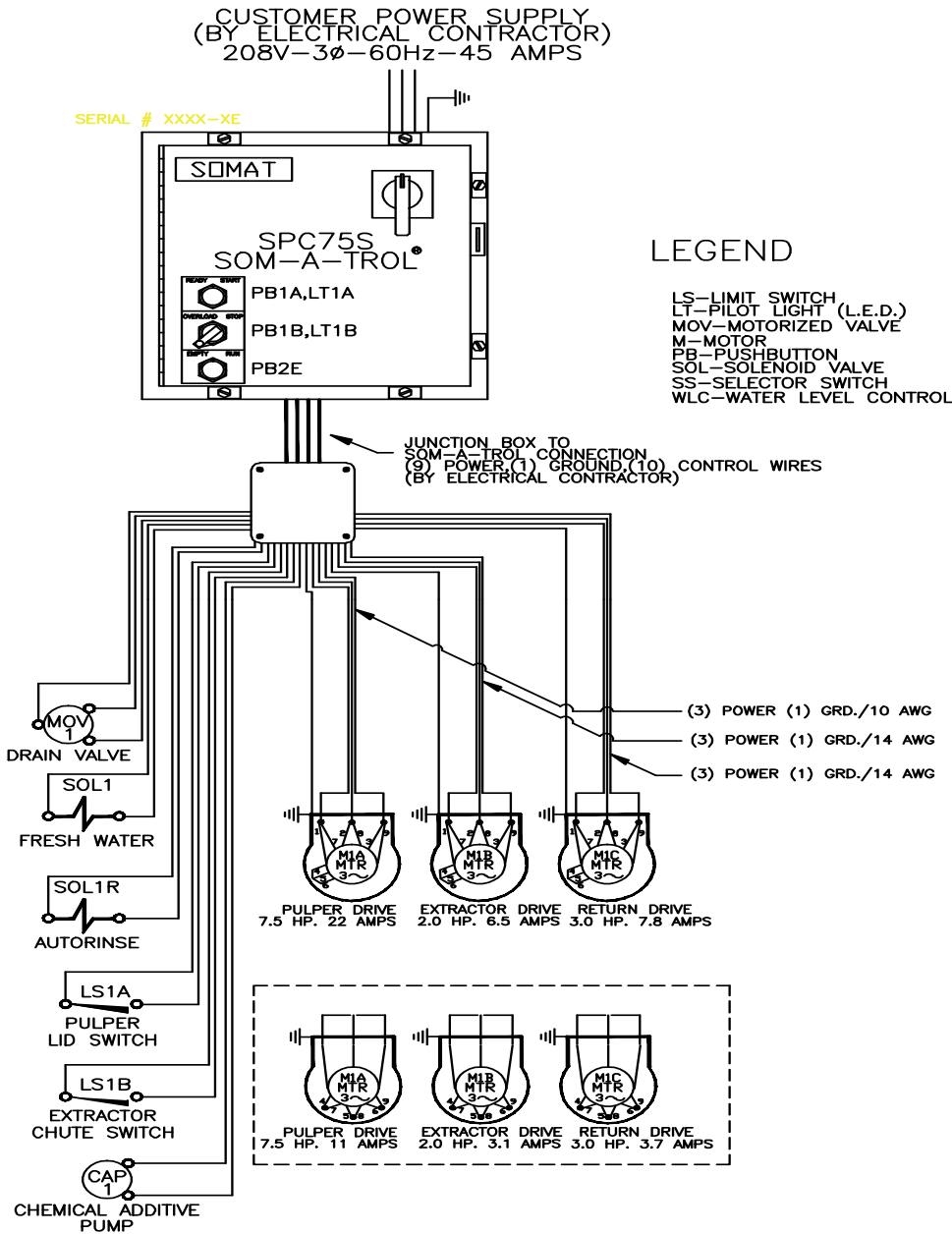


### Dimensions

<b>Total Height:</b> 66" (1677mm)	<b>Equipment weight:</b> 900 lbs. (408kg)
<b>Tank Height:</b> 43" (1093mm)	<b>Operating weight:</b> 1155 lbs. (524kg)
<b>Length:</b> 67.25" (1709)	<b>Crated weight:</b> 1175 lbs. (533kg)
<b>Width:</b> 30" (762mm)	<b>Crated volume:</b> 167 cu. ft.

# SPC-75S Close Coupled Pulping System

## Utility Specifications



WIRE SIZING GUIDE		
DEVICE	WIRE SIZE	TYPE
SOM-A-TROL CONTROL LOGIC (110V) (LIMIT SWITCH) (SOL VALVE, ETC.)	18 AWG	MTW-105°C
3HP RETURN PUMP MOTOR $\oplus$ 208/230V	14 AWG	MTW-105°C
2HP EXTRTR DRIVE MOTOR $\oplus$ 208/230V	14 AWG	MTW-105°C
7.5HP PULPER DRIVE MOTOR $\oplus$ 208/230V	10 AWG	MTW-105°C

USE NEXT SIZE AWG FOR RUNS OVER 150 FEET

WIRE SIZING GUIDE		
DEVICE	WIRE SIZE	TYPE
SOM-A-TROL CONTROL LOGIC (LIMIT SWITCH) (SOL VALVE, ETC.)	18 AWG	MTW-105°C
3HP RETURN PUMP MOTOR $\oplus$ 480V	14 AWG	MTW-105°C
2HP EXTRTR DRIVE MOTOR $\oplus$ 480V	14 AWG	MTW-105°C
7.5HP PULPER DRIVE MOTOR $\oplus$ 480V	14 AWG	MTW-105°C

USE NEXT SIZE AWG FOR RUNS OVER 150 FEET (46 METERS)

ALL PANELS TO BE OF STAINLESS STEEL CONSTRUCTION.

### Other Utility Requirements

**Fresh water:** 18 gpm @ 30 psig, 1/2" NPT (approximate usage 60—120gph).

**Drain:** 3" minimum floor sink, with stainless steel removable basket recommended.